



PROCESS CONTROL INSTRUMENTS

- ◆ Limit Switch Box
- ◆ Air Filter Regulator

ABOUT US

SKYWELL is a high-tech auto-control valve accessories manufacturer.

The products range are as follows: valve positioner, solenoid valve, limit switch, air filter regulator, pneumatic actuator, electric actuator, electro-hydraulic actuators and other valve accessories.

Our products have been widely used in petroleum, chemicals, electric power, metallurgy, steel, water treatment, bio-pharmaceutical, paper making, foodstuff, military and other fields.

SKYWELL is certified with ISO9001:

2015 quality management system certification.

Besides, our products have obtained CE, ATEX, NEPSI, SIL3 certificates.

We always focus on helping customers to get the best effect of flow controls with professional service and excellent quality, and strive to become the world's leading brand of valve accessories.

Contents

Limit Switch Box	01
SWLS100 Series (Compact type)	02
SWLS300 Series (Explosion-proof type).	03
SWLS300-S Series (Explosion & Stainless Steel type).	04
SWLS800 Series (Linear type).	05
Air Filter Regulator.	08
SWC-22 Series Air Filter Regulator.	08

◇ Limit Switch

SWLS Series Limit Switch is consistent with IP protection standard, ISO5211 standard and NAMUR standard. The shell mainly include compact type, standard type, explosion-proof type and stainless steel type; Mechanical switch, proximity switch and Magnetic induction type are selectable for switch specification, which provide users with safety, high-quality and reliable automatic products.



SWLS100



SWLS300



SWLS300-S



SWLS800



SWLS800-S

◆ Technical Parameter

Item/Model	SWLS100	SWLS300	SWLS300-S	SWLS800	SWLS800-S
Body Material	Aluminum	Aluminum	SS316L	Aluminum	SS316L
Paint coat	Polyester powder coating		-	Polyester powder coating	-
Cable interface	2— M20 X 1.5	2-NPT3/4"	2-NPT3/4"	2-NPT3/4"	2-NPT3/4"
Terminal Blocks	8 points		6 points	8 points	6 points
Enclosure Grade	iP67				
Explosion Proof		ExdIICT6	ExdIICT6	None Explosion/ExdIICT6	ExdIICT6
Stroke	90°	90°	90°	10 - 100mm	10-100mm
Ambient Temp.	-20°C -70°C				
Switches	SPDTx2/Proximity Switch x2				
Switch Specifications	Mechanical Switch: 16A 125VAC/250VAC, 0.6A 125VDC, 10A 30VDC Proximity Switch: Intrinsically safe: 8VDC. NC ; None Explosion : 10 -30VDC, 150mA				
Position Transmitter	4 -20mA, with 24VDC Supply				

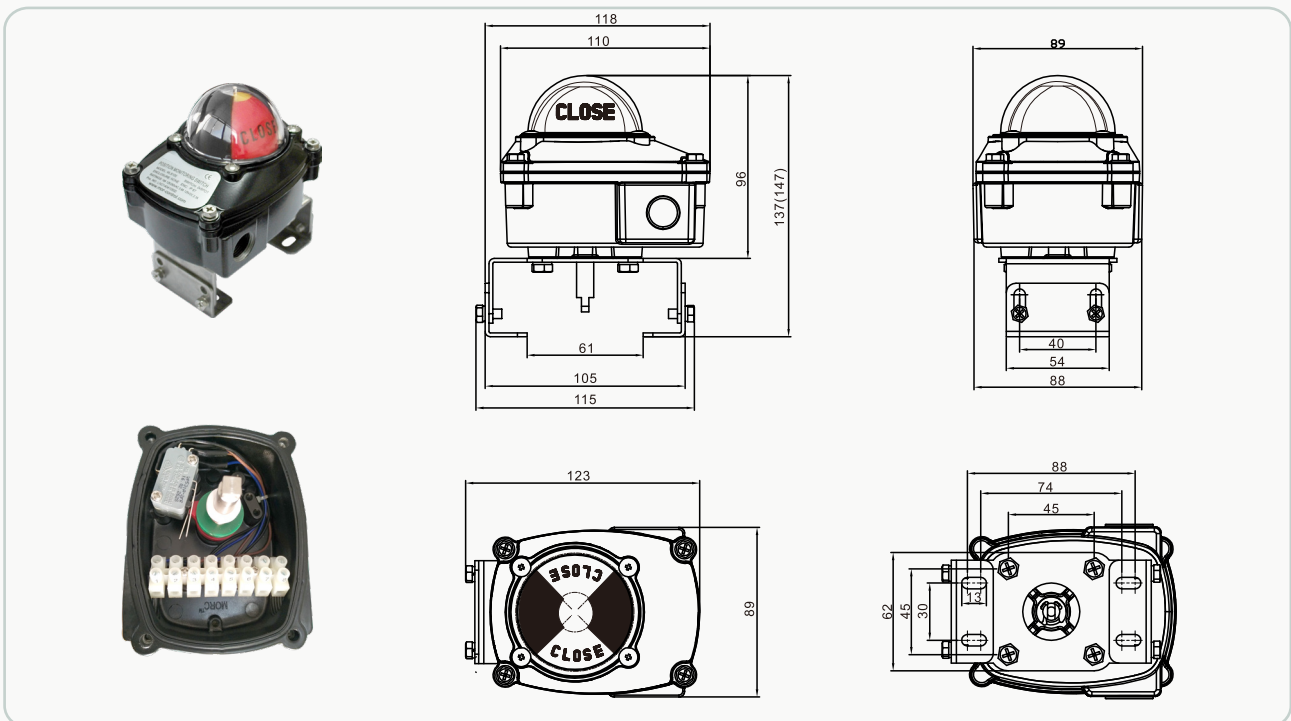
Remark: 1. The date on the table is standard configuration, please refer to part number or manual for optional parameters.
2. Optional ambient temperature for mechanical type and magnetic proximity type is -40°C-80°C,

◇ SWLS100 Series Limit Switch Box

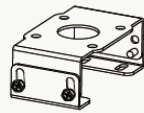
SWLS100 Series Limit Switch Box SWLS100 series applied for indicating OPEN/CLOSE position of rotary valve and output ON/OFF signal to control system. Compact and stable design. Fit to apply in low/high temperature hazardous environment.

◆ Charateristic

- ▶ Two dimensional indicators, High resolution Color indicate the position of valve.
- ▶ In line with NAMUR standard to realize the max. Interchangeability;
- ▶ With anti-off bolt to prevent becoming flexible;
- ▶ Double electrical interfaces M20 x 1.5;
- ▶ Ambient temperature: -25-85°C; Protection grade: IP67.



□ Product Code

Model	Switch Type	Cable interface	Optional	Ambient Temp.	□□□	Standard Bracket
SWLS100	-Mechanical Switch M0:2-SPDT - Proximity Switch P0: 2-wire proximity switch (Intrinsically Safe) P1: 2-wire proximity switch P2: 3-wire proximity switch	0 : 2-G1/2" 1 : 2- NPT1/2" 2 : 2-M20 x 1.5	0 : None	None: -20 -70°C L: -40 - 80°C H : -20 - 120°C	Special Code	30x 80(130) , H20(30) H20(30) is prominent shaft height of Actuator. 

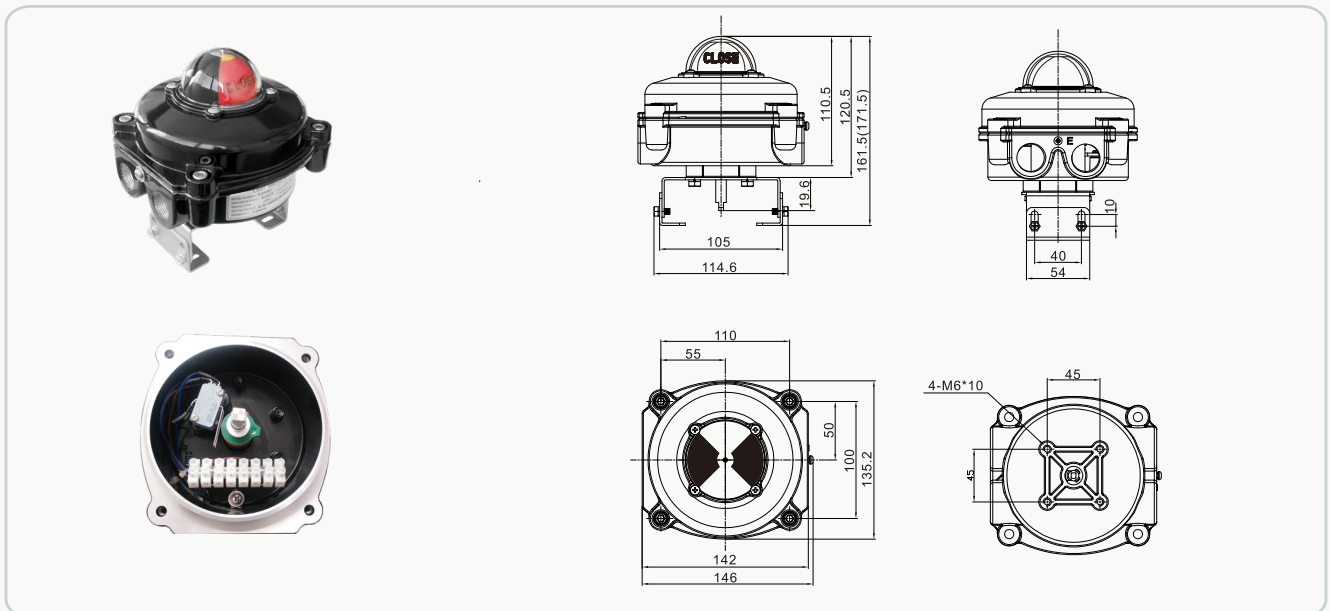
Remark: 1, The intrinsic safe proximity switch selects P&F switch by default.
2. Other technical questions related to switch type, please consult SKYWELL.

◇ SWLS300 Series Limit Switch (Explosion-proof type)

SWLS300 Series Limit Switch (Explosion-proof type) SWLS300 Series Limit Switch is applied for indicating Open/Close position of rotary valve both in-sight and remote. With reliable performance, it is acceptable for the hazardous environment. The shell meets the explosion-proof standard and IP grade is IP67.

◆ Characteristics

- ▶ With two dimensional indicators, which can indicate the valve position with full angle.
- ▶ In line with NAMUR standard to realize the maximum interchangeability.
- ▶ With anti-off bolt in the upper cover to prevent falling off when disassembled.
- ▶ The shell material is die-cast aluminum alloy, with polyester coating.
- ▶ With double wire interface, double G3/4" pipe interface, other standards are selectable.
- ▶ Multiple contact terminal row, terminal blocks with 8 standard contacts. Multiple terminals are optional.
- ▶ The spring loaded can be debugged without extra tools.



◆ Product Code

Model	Switch Type	Cable interface	Optional	Ambient Temp.	-□□□	Standard Bracket
SWLS300	-Mechanical Switch M0:2-SPDT M1: 3-SPDT M2: 4-SPDT M3:-2-DPDT - Proximity Switch P0: 2-wire proximity switch (Intrinsically Safe) P1: 2-wire proximity switch P2: 3-wire proximity switch P3: magnetic Proximity Switch(SPDT)	0: 2-G1/2" 1: 2-NPT1/2" 2:-M20x1.5 4: 2-G3/4" 5: 2-NPT3/4"	0 : None 1: Built-in PTM 2: With Solenoid Valve (PTM: Position Transmitter Model)	None: -20 - 70°C L: -40 -80°C	Special Code	30 x 80(130) , H20(30) H20(30) is prominent shaft height of Actuator.

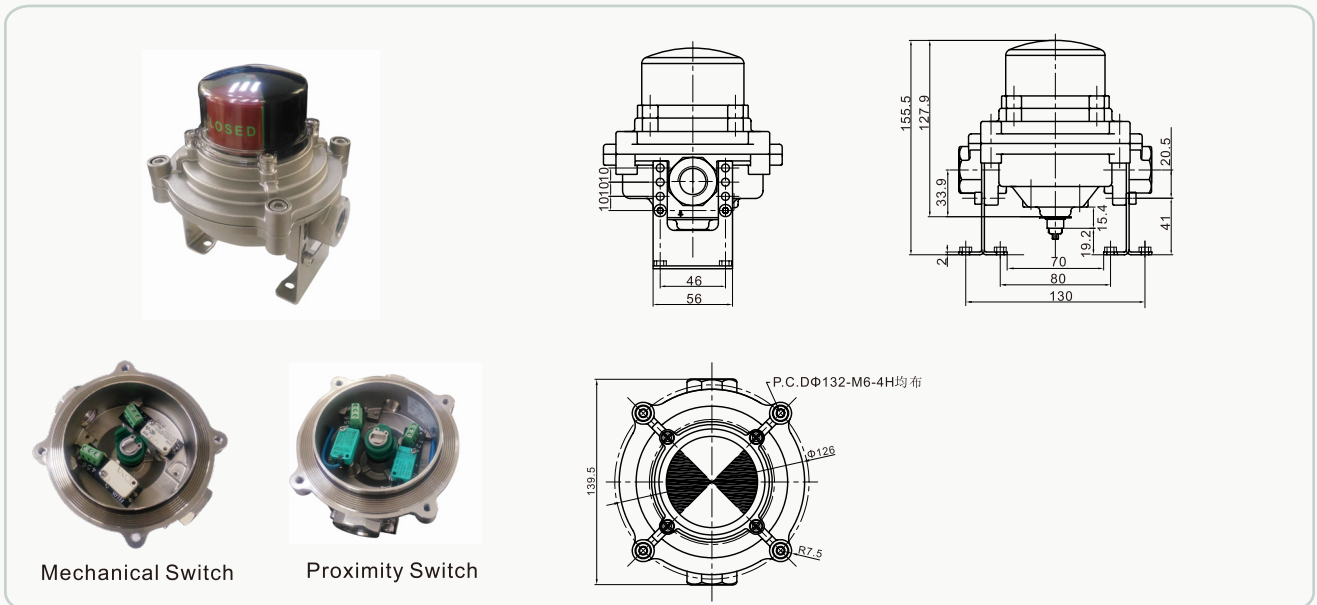
Remark: 1. The intrinsic safe proximity switch selects P&F switch by default.
2. Other technical questions related to switch type, please consult SKYWELL.

◇ SWLS300-S Rotary Series(Stainless Steel)

SWLS300-S Rotary Series(Stainless Steel) SWLS300-S Series Limit Switch is used for indicating switch position local and output of switch signal remotely of automatic valve. The shell material is SS316L. Designed with explosion-proof structure, suitable for ExdIICT6 standard, the products are widely used in petroleum, natural gas and other industries.

◆ Characteristics

- ▶ Seal design for double shafts, each shaft is connected with the upper cover and base respectively, easy to disassemble and install, and has good protection function.
- ▶ Accurate concentric design to ensure accurate valve position.
- ▶ With two dimensional indicators, which can indicate the valve position with full angle.
- ▶ In line with NAMUR standard to realize the maximum interchangeability.
- ▶ With anti-off bolt in the upper cover to prevent falling off when disassembled.
- ▶ The shell material is SS316L, and can be used for highly corrosive environment.
- ▶ With double wire interface, double G3/4" pipe interface, other standards are selectable.
- ▶ Multiple contact terminal row, terminal blocks with 8 standard contacts. Multiple terminals are optional.
- ▶ The spring loaded can be debugged without extra tools.



Mechanical Switch

Proximity Switch

◆ Product Code

Model	Switch Type	Cable interface	Optional	Ambient Temp.	-□□□	Standard Bracket
SWLS300-S	-Mechanical Switch M0:2-SPDT - Proximity Switch P0: 2-wire proximity switch (Intrinsically Safe) P1: 2-wire proximity switch P2: 3-wire proximity switch	0: 2-G1/2" 1: 2-NPT1/2" 2:-M20x1.5 4: 2-G3/4" 5: 2-NPT3/4"	0 : None	None: -20 - 70°C L: -40 -80°C	Special Code	30 x 80(130) , H20(30) H20(30) is prominent shaft height of Actuator.

Remark:	<ol style="list-style-type: none"> 1. The intrinsic safe proximity switch selects P&F switch by default. 2. Other technical questions related to switch type, please consult SKYWELL.
---------	-------------------------------------------------------------------------------------------------------------------------------------------------------------------------------------------------------------------

◇ SWLS800/SWLS800-S Series(Linear type)

SWLS800/SWLS800-S Series (Linear type) SWLS800-SWLS800-S Series Limit Switch is applied for indicating Open/Close position of valve position local and remote. The IP grade is IP67. Non-explosion and Explosion-proof type are selectable. It can built in with a variety of switches. Material for SWLS800 is Aluminum Alloy. Material for SWLS800-S is SS316L.

◆Characteristics

- ▶ With two dimensional indicators, which can indicate the valve position with full angle.
- ▶ In line with NAMUR standard to realize the maximum interchangeability.
- ▶ With anti-off bolt in the upper cover to prevent falling off when disassembled.
- ▶ The default shell material is die-cast aluminum alloy, with polyester coating; SS316L material is selectable.
- ▶ With double wire interface, other standards are selectable.
- ▶ Multiple contact terminal row, terminal blocks with 8 standard contacts.
- ▶ Multiple terminals are optional.
- ▶ The spring loaded can be debugged without extra tools.

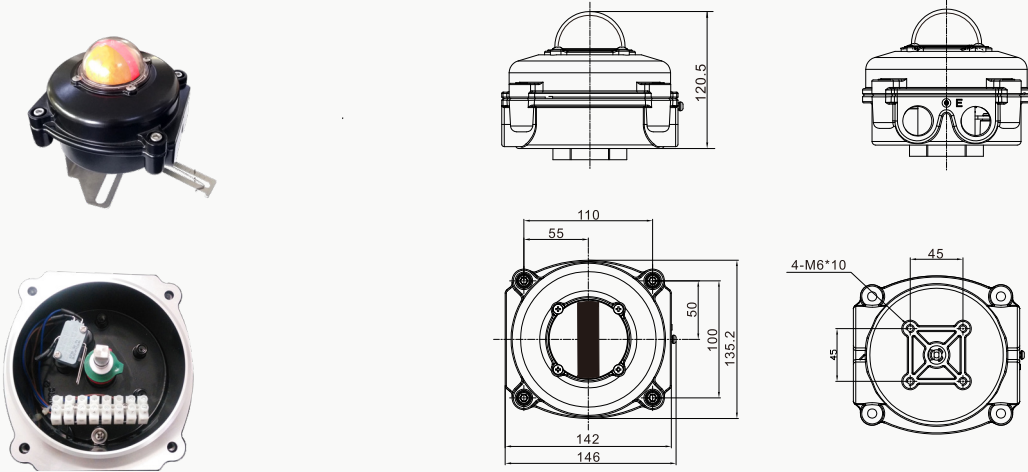


SWLS800



SWLS800-S

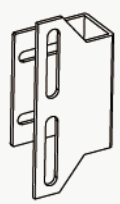
SWLS800



The technical drawings for the SWLS800 include:

- Top view showing a height of 120.5 mm.
- Front view showing a width of 110 mm and a depth of 50 mm.
- Bottom view showing a diameter of 142 mm and a total width of 146 mm.
- Side view showing a diameter of 135.2 mm and a depth of 100 mm.
- Detail view of the mounting holes showing 4-M6*10 holes with a diameter of 45 mm.

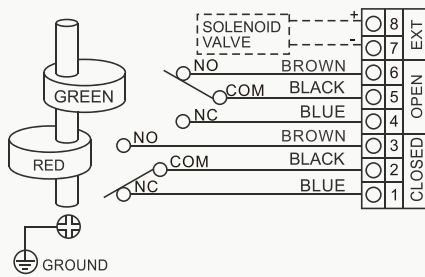
◆Product Code

Model	Switch Type	Cable interface	Optional	Ambient Temp.	-□□□	Standard Bracket
SWLS800N (No-Explosion)	-Mechanical Switch M0:2-SPDT	0: 2-G1/2" 1: 2-NPT1/2"	0 : None 1: Built-in PTM	None: -20 - 70°C L: -40 -80°C	Special Code	
SWLS800C (ExdIICT6)	M1: 3-SPDT M2: 4-SPDT	2:-M20x1.5 4: 2-G3/4"	(PTM: Position Transmitter Model)			
SWLS800-S (SS316L, ExdIICT6)	M3:-2-DPDT - Proximity Switch P0: 2-wire proximity switch (Intrinsically Safe) P1: 2-wire proximity switch P2: 3-wire proximity switch P3: magnetic Proximity Switch(SPDT)	5: 2-NPT3/4"				

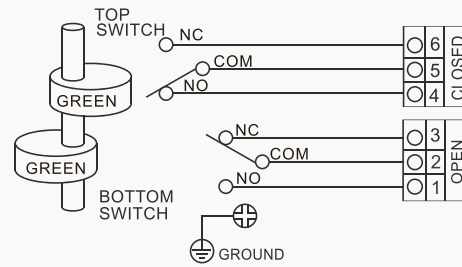
Remark: 1. The intrinsic safe proximity switch selects P&F switch by default.
2. Other technical questions related to switch type, please consult SKYWELL.

◆ Wiring diagram

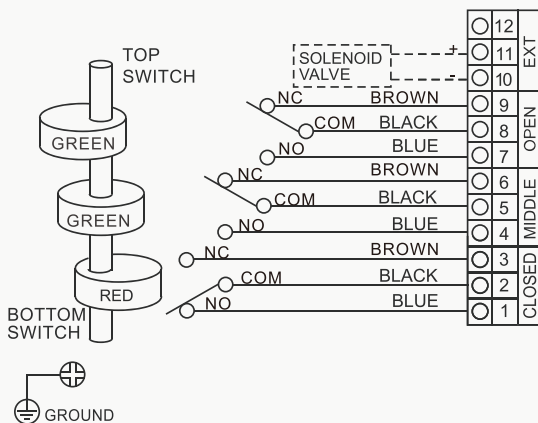
SWLS100/300
2*SPDT Mechanical Switch



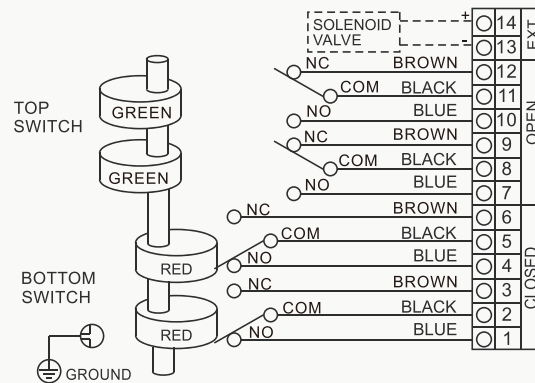
SWLS300/800-S
2*SPDT Mechanical Switch



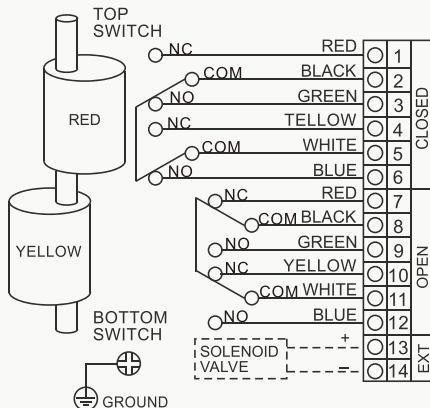
SWLS300
3*SPDT Mechanical Switch



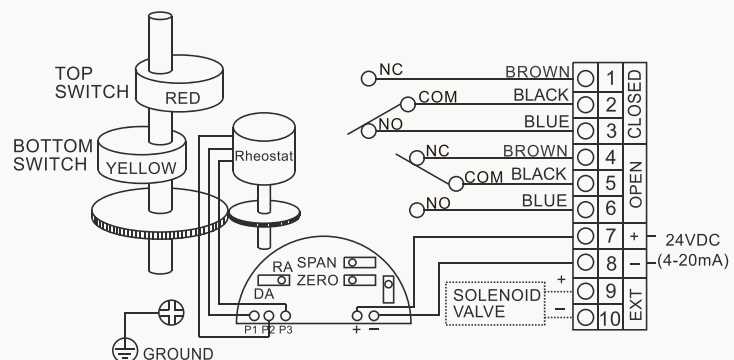
SWLS300
4*SPDT Mechanical Switch



SWLS300
2*DPDT Mechanical Switch



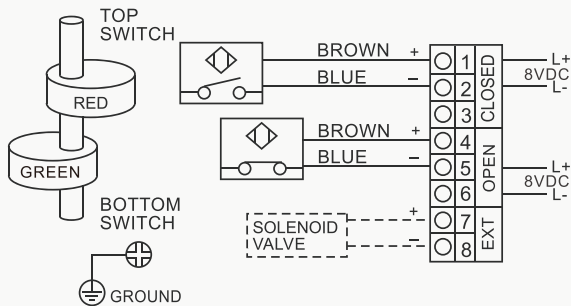
SWLS300
2*SPDT Mechanical Switch+PTM



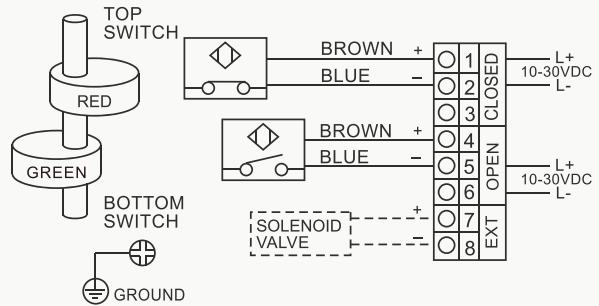
NO: Normal Open , NC: Normal Close

The wiring diagram is for reference only, with the wiring diagram of the actual supply as the criterion.

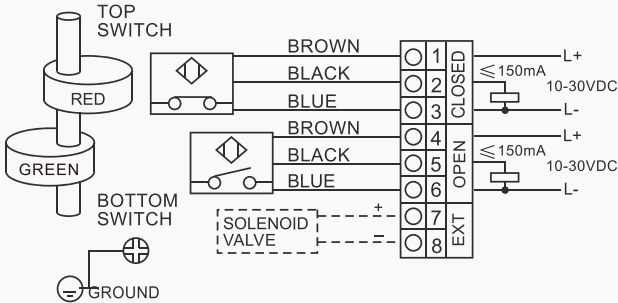
SWLS100/300
2-wire Proximity switch-NC
(Intrinsically safe Type)



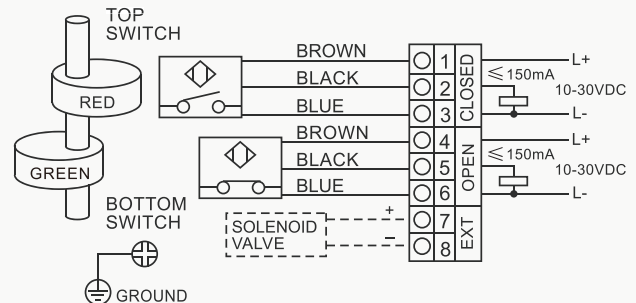
SWLS100/300
2-wire Proximity switch-NO
(Normal Type)



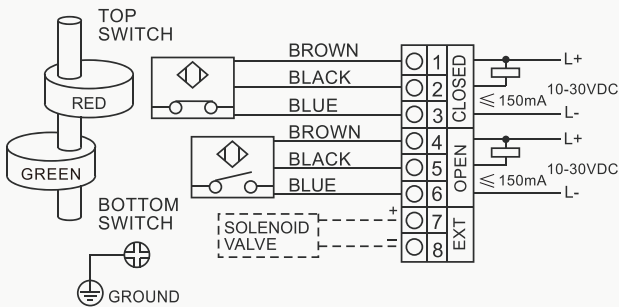
SWLS100/300
3-wire PNP Proximity switch-NO
(Normal Type)



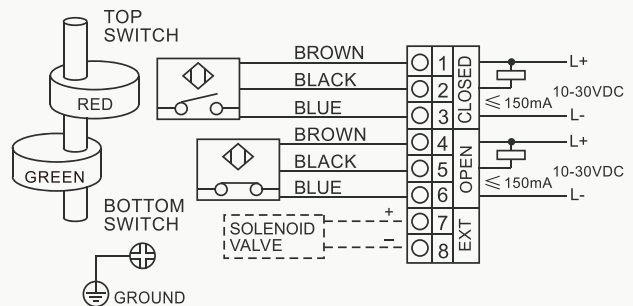
SWLS100/300
3-wire PNP Proximity switch-NC
(Normal Type)



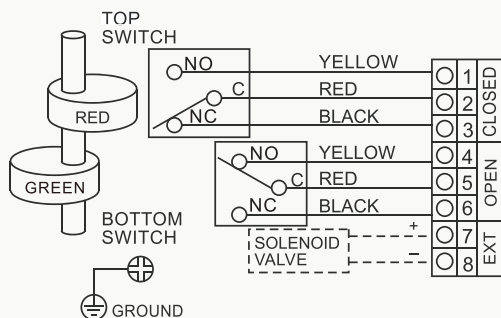
SWLS100/300
3-wire NPN Proximity switch-NO
(Normal Type)



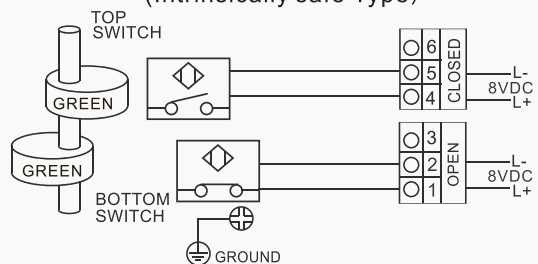
SWLS100/300
3-wire NPN Proximity switch-NC
(Normal Type)



SWLS100/300
Magnetic Proximity switch



SWLS100/300
2-wire Proximity switch-NC
(Intrinsically safe Type)



NO: Normal Open , NC: Normal Close

The wiring diagram is for reference only, with the wiring diagram of the actual supply as the criterion.



WWW.SKYWELL.COM.PK