



SkyView - A SCADA Software With
25+ Years Of Development History

SKYVIEW - A SCADA PLATFORM FOR MID - AND HIGH-END INDUSTRIES | SMALL TO LARGE SCALE APPLICATIONS

CONFIGURABLE SCADA PLATFORM



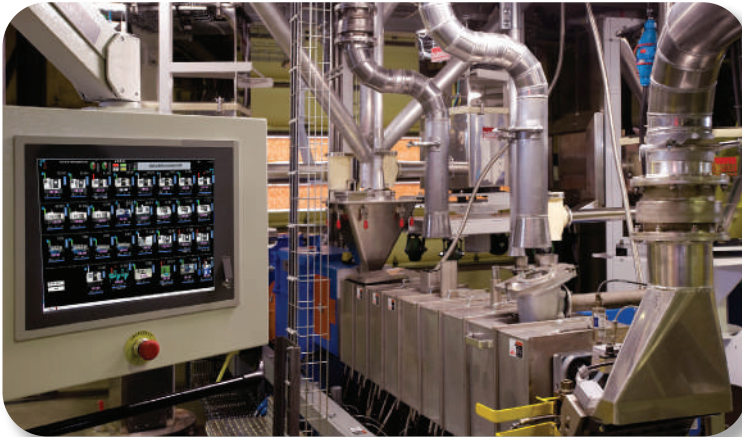
OVERVIEW

SkyView is a powerful Windows-based industrial SCADA software for monitoring & controlling industrial processes. With over 25 years of development history, it's now been a leading automation software in the global automation market and has large number of installations and users overseas. SkyView is used in various industries and has achieved the customer's recognition and reputation in international markets due to its remarkable features such as easy-to-use interface, smooth navigation, web publishing functions, local & remote data visualizations. It features strong IO driver support, multiple device compatibility, customized OEM services, project security, price performance, and many more. SkyView inherits powerful functions, stability, and reliability of operations.

1. Graphical display to monitor and control Production Flow System
 2. (With Dynamic Animations)
 3. Data Collection, Analysis & Management
 4. Easy-to-use, easy-to-learn script
 5. Perfect Alarm Monitoring & Querying
 6. Historical data logging, Report System
 7. Open Interfaces to exchange data with other 3rd-party applications
- Web Publishing- monitor and control wherever

SKYVIEW HISTORY

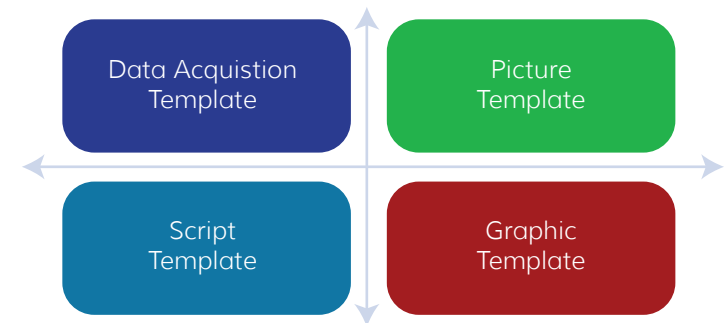
With over two decades of improvements, SkyView keeps adding new functions and upgrading to newer versions. Its alarm, reports, historical data storage, data display and web publishing functions are all very powerful and meets user's needs.



SKYVIEW FEATURES

Multiple redundancy functions, support dual machine redundancy, dual device redundancy, dual network redundancy etc. With high performance, response within 1 second.

1. Support multiple communication protocols; support GPRS, SMS, and OPC communication mode.
2. Embedded script, support timing, triggering and custom functions for flexible extension.
3. Provide efficient and rich industrial graphics libraries for many specific industries.
4. Support access to real-time data on site
5. A variety of real time and historical trends including: XY curve, historical/real-time trend controls, etc.; supports multiple drawing areas to meet the basic use of various scenarios, and access is fast and simple;
6. Support Echarts display that can be applied to large screen and cockpit, and the scene is more abundant and flexible
7. Embedded report system, customized real-time and historical report, provide report wizard, and configure database reports without scripts.
8. Support 3D mainstream format import. Support mainstream 3D model formats such as OBJ, IVE, 3DS, STL, etc.
9. Support animation connection configuration; Process data-driven animation, automatic alarm positioning equipment, equipment simulation, etc.;
10. Powerful alarm system, support real-time printing, SMS-alarm, email-alarm.
11. Embedded historical database, meet the demands of long-term data storage.
12. Support SQL, access to all kinds of database.
13. Support CS and BS structure mode, meet users' demands.
14. Template, modular configuration unit, improving engineering efficiency.
15. The opening API interface XML technology, flexible systems integration.
16. Electronic record & audit trails function according to FDA's specifications 21CFR, Part11 and GMP standard.
17. Import AutoCAD graphics into the picture of SkyView.
18. SkyView mobile client.



SKYVIEW SPECIFICATIONS

SkyView provides different editions and specifications to meet various needs of customers, which are distinguished by different encryption license keys based on,

Functions: Development, Runtime, Webserver, Skymobile

Language: English/Chinese, Simple/Chinese, Traditional/Japanese/Korean

Tags of Development: 256, 512, Unlimited (60,000)

Tags of Runtime: 64, 128, 256, 512, 1024, Unlimited (60,000)

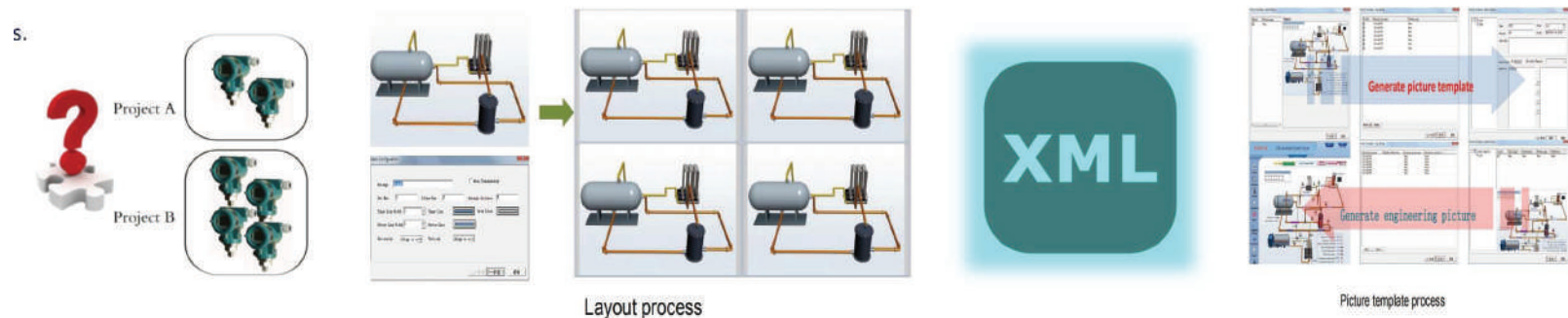
Users of Webserver: 5, 10, 20, 50, Unlimited.

THE OPENING API INTERFACE XML TECHNOLOGY, FLEXIBLE SYSTEM INTEGRATION

XML Language, with its better scalability, normative, readability, compatibility and transmission characteristics make it one of the widely used languages in enterprise integration and application development. In the development environment of SkyView, it provides open interfaces based on XML technique and extensive import and export, and the function of transferring engineering data to visualized standardized XML; also provides the corresponding API interface to allow to use third-party software platform to develop and configure applications.

All objects in the SkyView project, such as variables, equipment, pictures, scripts, and so forth can be transferred by this feature and described easily by XML Language. The project file described by XML format can be imported easily to SkyView and run directly without any modification.

SkyView runtime system provides a complete data access to API interfaces for real-time, historical data, real-time and historical alarm, which enhances data communication capacity greatly with the third parties, and improves the capacity of interconnection among systems and data exchange with the upper management system.



SKYVIEW MOBILE CLIENT-ADAPT TO THE NEED OF MOBILE INTERNET ERA

SkyView mobile client product help the manager and the operator understand and control the production process and the equipment status everywhere. It helps people get the real-time data and alarm, analysis and report, and generates all kinds of needed report and trend graphic to realize mobile office. To make the production process more transparent to the management, it helps improve management efficiency. SkyView mobile clients can also be installed on the operator's handheld terminal to control equipment in real-time with proper authority.

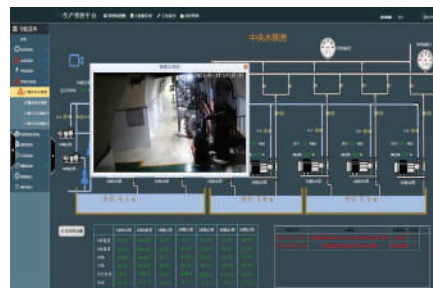
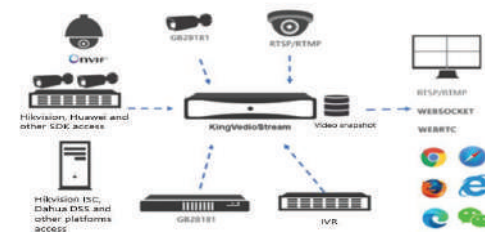


FDA 21CFR PART 11 COMPLIANCE, GMP, ELECTRONICS SIGNATURE & AUDIT

Electronic signature & E-record is a signature that is used to request the operators in food, pharmaceutical, and other industries to record all the operations in the production process to standardize production management. It also has a specific requirement for configuration software, requests strong security, strict user authentication, rights management, and auditing measurement to meet specific security requirements of FDA 21 CFR Part 11 items. All of these are for standardizing production and reducing production accidents.

CCTV MONITORING

- Support GB28181 and the Onvif protocol required by the Ministry of Public Security
- Support RTSP/RTMP pull stream/RTMP push stream/GB28181 camera NVR integration
- Support HLS/RTSP/RTMP/WS/RTC service, support H.264 protocol
- Support video linkage
- Support screen and video linkage
- Support the linkage of alarm and video screen
- Support mainstream manufacturer brands
- Hikvision, Dahua, Uniview and other cameras
- Support real-time video browsing, historical video playback, PTZ control
- Device video protocol customization



SkyView Functions

Multiple redundancy functions, support dual machine redundancy, dual device redundancy, dual network redundancy etc. With high performance, respond within 1 second.

Graphics Development

“WindowMaker” provides a convenient environment for Graphics developing with toolkits and gallery.

- Powerful toolkits, Unlimited Color options and Gradient Color are used to make realistic screens.
- Rich Gallery Wizards, and the engineers can also build up their personalized gallery.

Alarm & Event

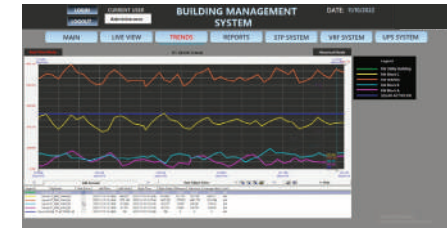
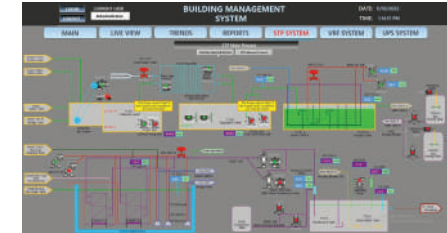
Alarm system includes definition, management, storage, notification styles, display and querying.

- Diverse types of alarm, including limit-exceeding, alarm by the rate of change, deviation alarm, etc.
- Supports Alarm grouping, alarm priority settings to manage a large amount of alarm info
- Multiple ways to save the alarm: files, database, and printer (for real-time print), etc.
- Provides multiple ways to notify the alarm: sound, flash, Email notifications, etc. Timely notify the operators to process the alarm info to reduce losses
- Application event: Operators change tags with data source of DDE or OPC
- Alarm window displays with various filters such as alarm group
- Query historical alarm info through alarm window, database querying
- Operate event: Operators modify tag value or values of other tag fields
- Enter event: Operators log in to a system or log out
- Station event: Operators start TouchView or exit in stand-alone or network node
- Event information can be displayed through the historical alarm window.

Historical Data

SkyView can log historical data either into its own historical database or third-party databases.

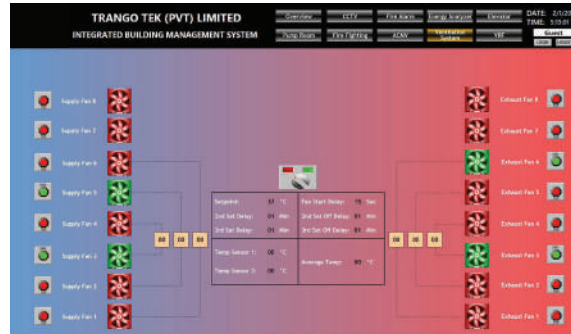
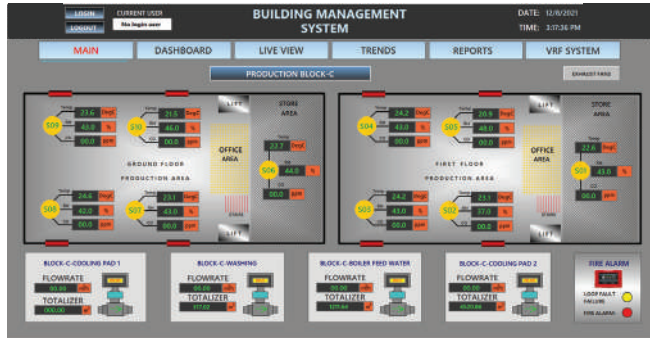
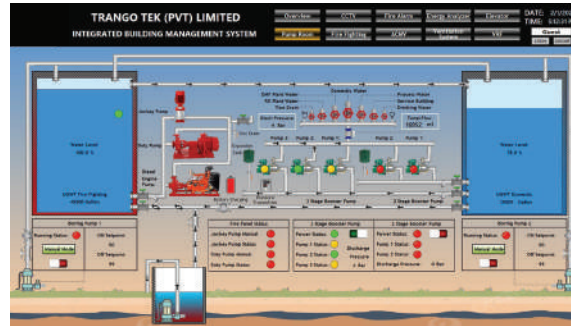
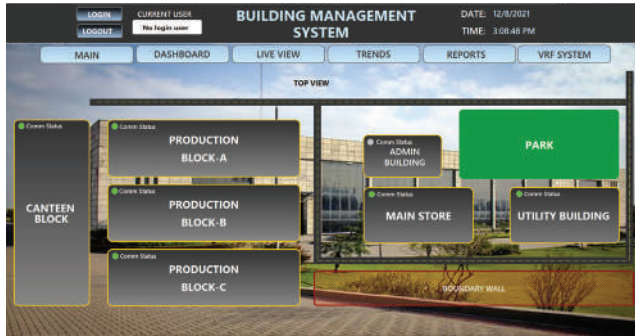
- For general trend curve graphics, each curve can be defined with its own Y-axis scope and unit, and the Y-axis coordinate can be adjusted its scope according to the data at the cure display region automatically
- Process the historical data during shutdown time and communication failure
- Store historical data of I/O tags according to the acquisition time
- Prompt when the hard disk space is less than the corresponding set value
- Enhanced the way of storing historical data, faster storage



Historical Trend Curve

Historical data can be displayed as curves through the Historical Trend Curve which is Active X control.

- Add, delete and hide curves in run-time
- Multiple types of curves
- Infinitely zoom in/out trend curves
- Compares 2 curves with different curves
- Supports millisecond-level data display
- Supports SkyView historical database, and ODBC data sources
- Supports to print out the curves diagram



HIGH SECURITY

Authentication
identification
Access control

Data Security
Support SSL transmission encrypted access
Support key data encryption

Authority management
"Role-Permission-User" three-level permission assignment
Custom users, custom roles and permission
Support single-screen access, single sign-on

Security Incident Handling
Self handling of security events
Record abnormal operation behavior and key operations
Support query and tracking of data sources and key operations

Interfaces

Multiple relational database support

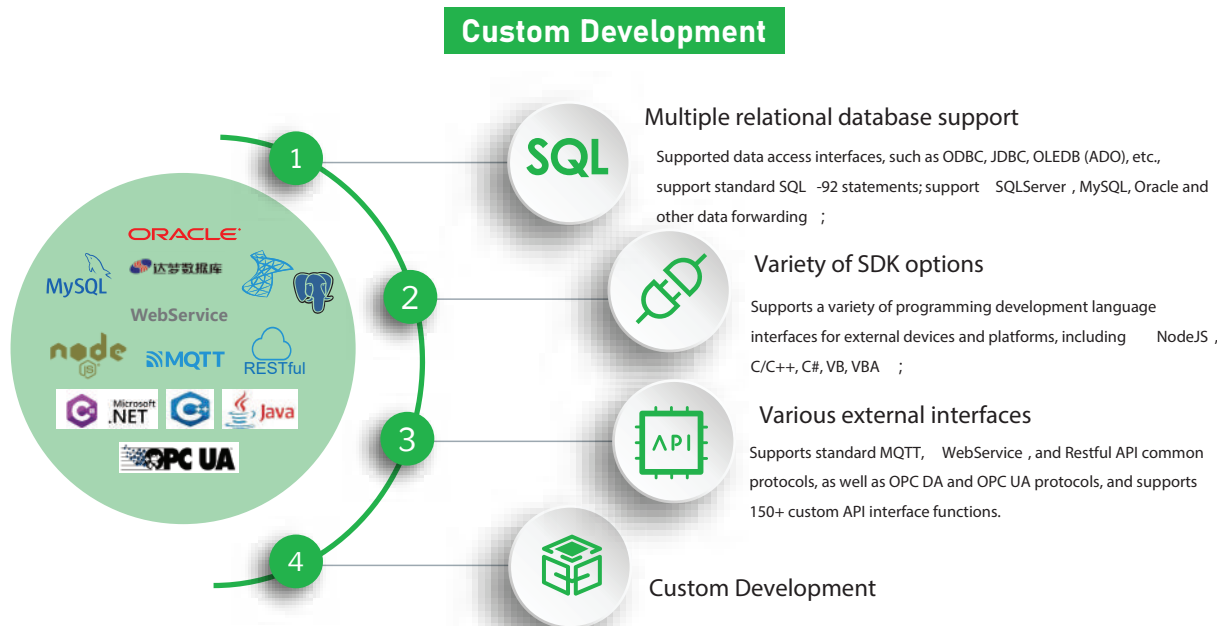
Supported data access interfaces, such as ODBC, JDBC, OLEDB (ADO), etc., support standard SQL-92 statements; support SQLServer, MySQL, Oracle and other data forwarding;

Variety of SDK options

Supports a variety of programming development language interfaces for external devices and platforms, including NodeJS, C/C++, C#, VB, VBA ;

Various external interfaces

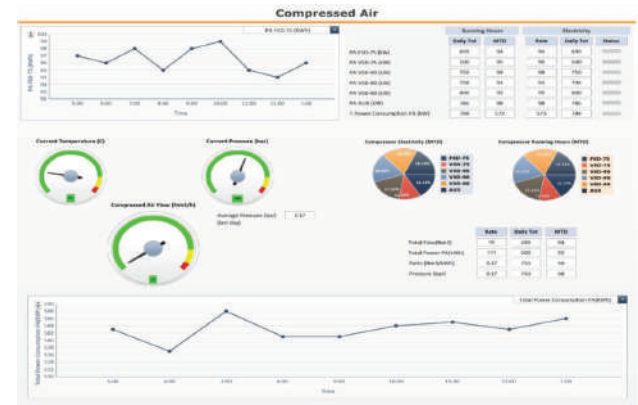
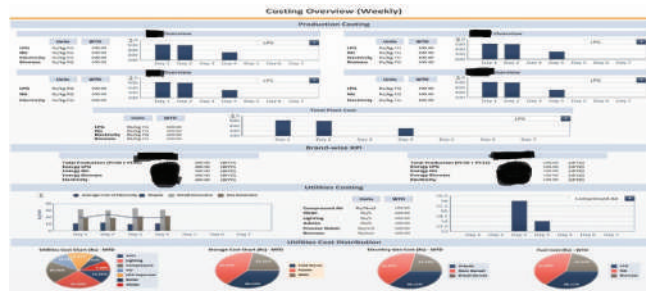
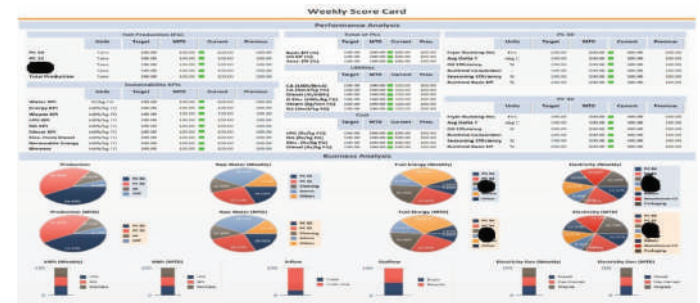
Supports standard MQTT, Webservice, and Restful API common protocols, as well as OPC DA and OPC UA protocols, and supports 150+ custom API interface functions.



More Functions

The SkyView as industrial monitoring and control platform provides extensive capabilities starting from data acquisition, internal data storage, external data storage, to data forwarding. Here are the Top 12 functions of SkyView.

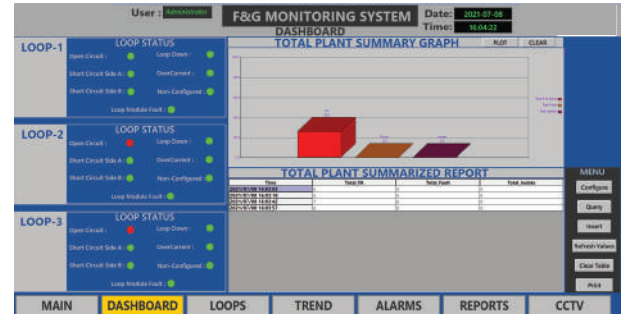
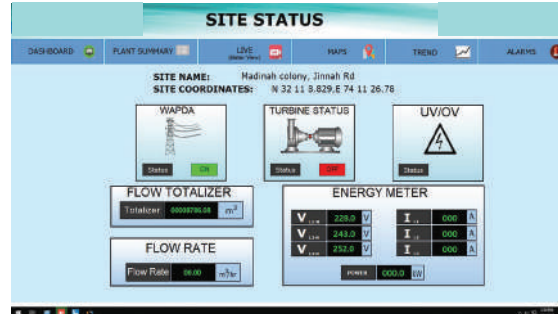
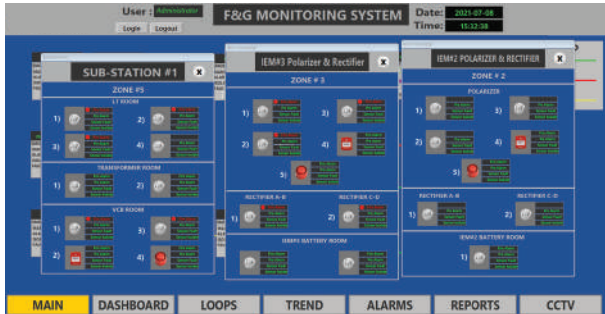
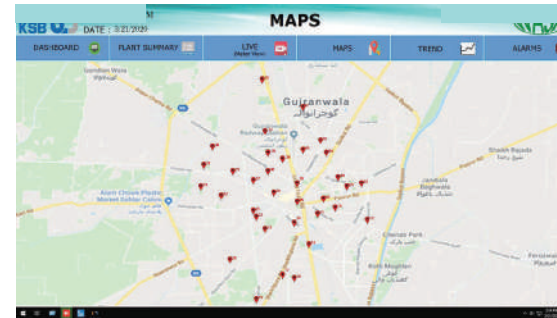
- Build-in Report
- Network Building
- E-Signature
- WebService
- Data Acquisition
- Web Publishing
- Redundancy
- Recipe Management
- Security & Users
- 3rd-party Supporting
- Project Management
- OPC DA/UA/MQTT



SkyView Advantages

SkyView can log historical data either into its own historical database, relational databases (MS-SQL Server, MySQL, Oracle, Access, etc)

- Supports more than 6000 protocol drivers as well as 1500 manufacturers.
- Various ways of third-party data access, easy to use.
- Widely used in many industries solutions, solutions that help to improve efficiency.
- Great continuity in usage habit, product style, engineering compatibility in each version, reduce the cost of learning and maintenance.
- Great security, precaution for data exchange, no matter in or out.
- Excellent technical service team who are responsible to solve all your technical issues in a time-bound manner





SKYWELL.LTD